

# Flat Glass Display Chest Freezers

## Features:

- Analog temperature display and controller
- Static cooling system
- Sliding flat glass doors with lock
- Removable rubber bumper on the engine side (30mm) for ventilation purpose
- Frequency/voltage: 50Hz/220-240 V
- Plastic coated steel baskets
- Castor wheels
- Powder coated steel exterior dan interior
- 70 mm thick insulation
- Ambient temperatures from +16°C to +38°C

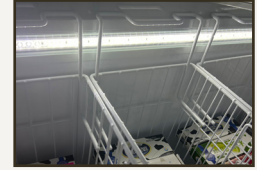


## SD117



NEW  
PRODUCT

NEW WITH  
LED INTERNAL  
LIGHT



LED internal light

**Gross volume:** 117 L

**Exterior dimensions in mm:** 735w x 485d x 820h

**Number of baskets:** 3

**Refrigerant:** R290

**Temperature set range:** ≤-18°C

**Gross/net weight:** 43/38 kg

**Energy consumption in 24h:** 1.42 kWh

## SD450



**Gross volume:** 390 L

**Exterior dimensions in mm:** 1314w x 694d x 830h

**Number of baskets:** 4

**Refrigerant:** R134a

**Temperature set range:** ≤-18°C

**Gross/net weight:** 81/73 kg

**Energy consumption in 24h:** 3.25 kWh

## SD650



**Gross volume:** 566 L

**Exterior dimensions in mm:** 1799w x 694d x 830h

**Number of baskets:** 6

**Refrigerant:** R404a

**Temperature set range:** ≤-18°C

**Gross/net weight:** 99/89 kg

**Energy consumption in 24h:** 4.6 kWh